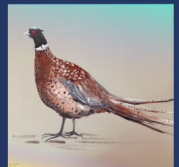
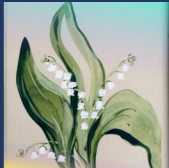
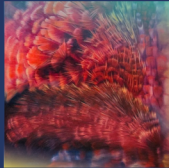




MAYFACS CHARITY ONLINE ART AUCTION CATALOGUE



MAYFACS are excited to be launching our inaugural online ART AUCTION of original pieces donated by talented local Artists to raise funds for MAYFACS



To register your bid or find out more
please scan the QR code

Opens : Friday 12th June 2026 6pm

Closes: Sunday 26th July 2026 8pm



BLACKCORE STUDIOS - Chanel No. 5 – Mayfield Edition

Screen Print

Dimensions – 28.5cm x 40.5cm Framed

This striking screen print by local printmakers Black Core Studios offers a blend of high-fashion glamour and hometown pride! 'Chanel No. 5 – Mayfield' cleverly reimagines the iconic Chanel No. 5 bottle with a distinctively local twist, proudly featuring "TN20 Mayfield, East Sussex" on its label.

This is a signed and embossed studio proof from an original screen print produced on premium Fabriano Artistico paper with elegant hand-deckled edging. It is beautifully presented in a classic black frame with a crisp white mount and includes assigned, stamped certificate of authenticity.

Reserve price: £120

<https://www.instagram.com/blackcorestudio/>

<https://www.blackcorestudios.co.uk/>

blackcorestudio@gmail.com



FINLAY-STEPHENS Dilys - Rouge Feathers

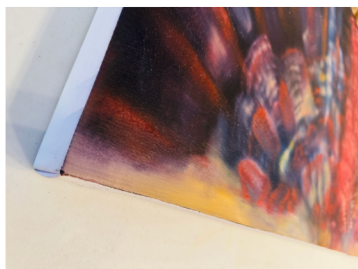
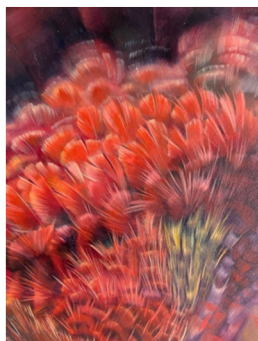
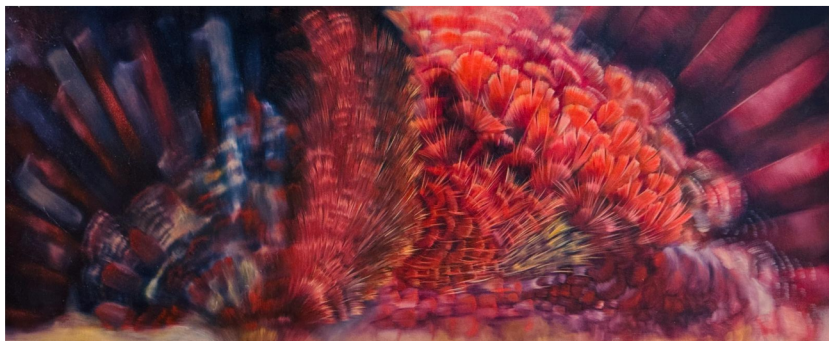
Acrylic on Canvas

Dimensions 50cm x 120cm

This is the largest piece in our collection. This original piece has been donated by a local resident to raise funds for Mayfacs. Having moved house, reluctantly it is no longer suitable in the new house.

Reserve price : £100

Originally purchased for £650 in 2005, from the artists first solo exhibition at Rainbird Fine Art, Clerkenwell Road London. Fundamental to all of Dilys's work is the convincing way in which she paints texture and detail, particularly in her paintings of birds.



HAWLEY Catherine - Cuckmere Haven

Oil on linen

Painting 30cm x 40.5cm (Framed size 33 x 43)

Inspired by long hikes through Cuckmere Haven and the Seven Sisters, the painting evokes the tranquillity of this timeless landscape, as the Cuckmere river gently winds its way through the flood planes and down to the sea.

Reserve Price: £150

Email: art@gawain.online

“Drawn to the natural world, I paint mainly in oils in a loose and impressionistic style. My work is a reflection of my fascination with the interplay of light and shadow. From the delicate beauty of a flower in bloom, to the raw power of a stormy sky, I find inspiration in the rhythms of nature.”



HUGHES Emma – Cheetah

Acrylic on Canvas

Dimensions: 29cm x 42cm (framed 33cm x 45cm)

‘Cheetah’ captures both elegance and urgency, inviting reflection on the fragility of one of nature’s most iconic species. Through her wildlife paintings, Emma Hughes explores themes of conservation and the relationship between humans and the natural world, highlighting both the beauty of endangered species and the challenges they face. A self-taught artist with a background in architecture, Emma is a member of the Association of Animal Artists and has exhibited in the UK and Malaysia. She is currently represented by Artisan Art Gallery in Exmouth.

Reserve of £100 (Studio price £400)

Instagram: @emmahughesfineart

Website: <https://www.saatchiart.com/en-gb/emmahughesfineart>



HUGHES Kate - Nest (New Life)

Acrylic wash

Dimensions : 38cm x 58cm (framed 56cm x 76cm)

‘Nest (New Life)’ is a subtle painting in acrylic wash where the moss glimmers and the twigs, when examined closely, are crusted with lichen turned gold. With the larger-than-life size and lacking an inhabitant, this piece invites the viewer to imagine what, or who, might be about to arrive here.’

Reserve of £100 (Studio price £350)

Kate Hughes is an artist born in Mayfield, East Sussex. Her practice includes painting, drawing, poetry and installation. She trained at CGLAS in London and is the winner of prizes including the Haworth Prize, the De Laszlo Prize for Portraiture and the Roger de Grey life drawing prize. Residencies include Papworth hospital dept of cardio thoracic surgery, Art Neuro and Cill Rialaig Ireland. Recent exhibitions include Discerning Eye at Mall Galleries (2024), Snape Summer Contemporary (2025) and Royal Academy Summer Exhibition (2026).

More info at katehughesart.com



LEWIS Sarah - Lily of the Valley & Tulips (sold as a pair)

Ink and gouache

Dimensions 13.5cm x 20cm (framed 24cm x 28cm)

A pair of simple inks and gouache of Lily of the valley and Tulips. The colours represent the freshness and joy of spring. Framed in wooden hand painted frames.

Reserve price £100 (sold as a pair)

Insta sarahlewis_artist



MARSH Johnny - Convent

Allotments, Mayfield

Watercolour

Dimensions 14cm x 19cm (framed
33.5cm x 28.5cm)

Reserve price £100

Small watercolour painting of the allotments behind the church. Johnny is a local artist and gardener, formerly a resident of Mayfield, now residing in Robertsbridge. He was in on the inception of Mayfacs.



MILLS Mike & Claire - The Hunter Goes Forth

Mounted print A2 size 16.5cm x 23.4cm

“The Hunter Goes Forth” is an A2 Limited Edition Giclée print of a young lioness preparing to hunt. The image was taken in South Africa and is donated by Wilderness Fine Art Photography. Professionally printed on museum-grade fine art paper for long-lasting colour quality, this signed image is presented in an off-white mount. Mike and Claire Mills are a Mayfield-based husband and wife team, both passionate about African wildlife photography and conservation. All of their images are taken in the wild in Africa.

Reserve price: £40 (Studio price £150)

<https://wildernessfineartphotography.com/about>



MONTAGU Claire

My work is mainly portraiture which are commissions in chalk pastel. My aim is to really capture the individual's personality whether human or animal.

Other paintings produced include a variety of subjects usually taken from life or sourced from my own photos. I take inspiration from my travels abroad and in the UK.

I work with chalk or oil pastel, acrylics, oils, watercolour and gouache. My knowledge and techniques are expanding all the time - in recent months I have been experimenting with oil painting and abstracts and I enjoy the challenges that this brings.

www.cbm-art.co.uk

Leaves

Acrylics on paper

Dimensions: 28cm x 38cm (framed 45cm x 55cm)

The bright colours of Autumn leaves have been depicted in an abstract way. It is intended to evoke warmth and the joy of nature.

Estimated market value £75



Magnolias

Chalk pastel on paper

Dimensions: 18cm x 27cm (framed 29.5cm x 39.5cm)

The arrival of Spring and the many pink and white blossoms inspired this picture.

Estimated market value £150

Norfolk Fisherman

Chalk pastel on paper (Unframed)

Dimensions: 34cm x 24cm (with mount 45cm x 35.5cm)

A love of portraiture led me to capture this character whose eyes have a distinct twinkle as if he knows much more than he's telling!

Estimated market value £50



ROSS Eleanor - Bowl of pears

Original oil pastel on paper (Unframed mounted)

Dimensions: 50.5cm x 40.5cm

Eleanor Ross Med BA hons, Textile Designer, Artist, Educator and Royal College of Art and Design graduate, committed to increasing participation in the arts and exploring the margins with compassion.

No Reserve price set

Eleanor's work combine traditional and contemporary techniques, creating unique and meaningful pieces that tell stories and connect people. As an artist, she focus's on themes of the environment and the natural world, using craft to foster understanding and beauty of the world around us.

Dedicated to making art accessible to all which engages and inspires diverse audiences. She aims to create a more inclusive and compassionate world, encouraging everyone to find their voice and contribute to the arts.

With this in mind Eleanor has set no reserve for this original oil pastel artwork, with the hope it can be made accessible and not intimidating for those wanting to help raise money for Mayfacs but perhaps wouldn't ordinarily be comfortable to participate in an art auction.

More works and commissions available on request:

Eleanor@eleanorross.co.uk



WAREHAM Hannah

Porcelain piece from the Petrified Beasts Series (2025)

Dimensions – 27.5cm x 27.5cm Framed

Hannah Wareham is a multidisciplinary artist working across ceramics, painting, casting, and installation. Her practice explores materiality, embodiment, and transformation, drawing on themes of science, nature, and the human body. Based in Mayfield, East Sussex, she studied Fine Art at Chelsea College of Arts and will begin her postgraduate studies at the Royal College of Art in autumn 2026.

Estimated Market Value £250

Instagram: [Hannah.wareham](#)

Website: Hwfinearts.co.uk

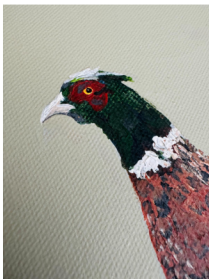


NE - Pheasant

Acrylic on Canvas

Dimensions 30cm x 30cm

This original piece has been donated by a local resident to raise funds for
Mayfacs



Reserve price £30





Original Art Auction hosted online on jumblebee.

<https://www.jumblebee.co.uk/mayfacs10yearanniversarysilentartauction>

All items to be collected from Mayfield or delivery can only be arranged at additional cost to buyer.

Each lot will have a reserve starting bid.

Bids will increase in £10 increments.

When the auction closes, all winners will receive a winner's email confirming the winning bid amount and it will include a payment link to pay through jumblebee's payment provider Stripe. Card fees are 2.4% plus 20p per transaction for UK cards or 3% plus 20p per transaction for AMEX (charged to MAYFACS). All auction winners will be given the option to donate this fee back to MAYFACS on top of their winning bid amount.

The small print: Whilst Jumblebee is a free online platform for MAYFACS to use, their fee for an online auction is 5% +VAT of the total winning bids. All remaining proceeds from this auction will go to supporting the work of MAYFACS

Proxy bidding information:

When bidding on an auction item, if you enter more than the minimum increment for an item then your bid will be used for proxy bidding. This is how it works:

1. You enter the absolute maximum that you are willing to bid for an item.
2. jumblebee places a bid on your behalf, using the minimum amount required to make you the highest bidder, i.e. current bid price plus bid increment OR the reserve price, if there is one and it can be covered by your proxy bid.
3. jumblebee continues to bid on your behalf, whenever you are outbid by another member's bid, until your maximum bid is exceeded or the auction is won.
4. jumblebee will notify you by email if your maximum bid is outbid by another member and provided the auction is still running, you will then have a chance to enter a new maximum bid if you wish.

For example: The current bid on an auction item is £100. The minimum increment is £10. You enter a bid of £150 (your maximum bid).

Using your bid, but increasing only by the minimum increment, jumblebee sets the current bid to £110.

Another person bids £130 but they are immediately outbid by jumblebee bidding on your behalf and the current bid goes up to £140.

The auction finishes and you have won the auction item at a price of £140.

