



Welcome to our MAYFACS eNewsletter

Mayfield & Five Ashes Community Services www.mayfacs.org.uk 01435 873888

December 2025

MAYFACS, LONDON HOUSE, HIGH STREET, MAYFIELD, TN20 6AQ
Registered Charity No. 1166647

MAYFACS OFFICE OPENING TIMES: Monday, Tuesday and Wednesday between 10am - 1pm every week.
Helpline phone number is monitored Monday to Friday only.

MAYFACS OFFICE Helpline Number: Please use our 01435 873888 number for COMMUNITY CAR REQUESTS and GENERAL HELP rather than our direct mobile numbers which are not checked every day. We know it rings for a long time, but do leave a message on our answerphone as the phones are checked DAILY (Monday to Friday office hours only) and we will call you back as soon as possible. We do not answer the landline due to confidentiality whilst we have open offices. **The Helpline and our Mobile Phones are not in operation over the weekends and evenings, so if you leave us a message over Saturday and Sunday, this will not be picked up until the following working day.**

Festive Season Office Closure: Please note that the MAYFACS office will be closed from Monday 22nd December and reopening on Monday 5th January 2026 for our team to have time with their families. However, we will still be checking the landline phone during this time (excluding bank holidays) and will deal with URGENT enquiries and community car drives where required. All other enquiries will be replied to when we reopen in January. Thank you for all your support in 2025!

December MAYFACS eNews ** BUMPER ISSUE **



Yarners Christmas Topper

Thank you to MAYFACS Yarners and Sew Inspired for your amazing Christmas Topper in time for Light switch on and late night shopping on 28th November. When you are in the High Street, do take a closer look at their incredible work.

Thank you to everyone involved!

Christmas Dinner Delivery Support

Uckfield RFC have organised a fantastic service this Christmas, delivering a FREE community Christmas Dinner to your doorstep, for those living on their own, elderly, families or individuals in need. We have spoken to the volunteers organising this service and they will deliver to our lovely community in Mayfield and Five Ashes as well.

If you would like to receive a dinner this year through this service, please let us know and we will book it in for you with the team. If you have neighbours or friends that you know may be on their own this Christmas day, or would benefit from a Christmas meal cooked and delivered by an incredible number of volunteers, please do let us know as well.

Fundraising for MAYFACS

MAYFACS RAFFLE – it's not too late to get your tickets but be quick the raffle will be drawn 8th December.

This year, MAYFACS are holding a fantastic raffle, with huge thanks to incredible support from local businesses and individuals. Funds raised from our raffle will make a huge difference to supporting our work across Mayfield and Five Ashes.



Tickets are available at £1 per ticket with a chance to win a fantastic range of prizes (listed in full on www.mayfacs.org.uk or see below list). You can purchase your tickets at MAYFACS office, at our groups and activities, and at Mayfield Post Office. **MAYFACS Raffle will be drawn on 8th December at London House at 12pm.**

Thank you to the generosity and support from Blush Beauty, Diverse Hair, Haley Copper Aesthetics, Four Winds, Mayfield Osteopaths, Fine Wines of Mayfield, Wellbrook Wines, Sew Inspired, The Middle House, Mayfield Gin, Black Core Studio, The Hair Studio, St Dunstan's Pharmacy, Burnett's Estate Agents, Woody's of Mayfield and individuals within the village for their kind donations.

We would also like to thank Mayfield Podiatry for giving MAYFACS a financial donation in lieu of a raffle prize.

Easy Fundraising Online – raise funds for MAYFACS for FREE this Christmas!

Did you know, you can raise funds for MAYFACS through [easyfundraising.org.uk](https://www.easyfundraising.org.uk) without it costing you a penny!

By signing up to [easyfundraising.org.uk](https://www.easyfundraising.org.uk) and selecting MAYFACS as your chosen charity to support, every time you shop online at retailers including John Lewis, Argos, Just Eat and 8000 more retailers, they donate to us!!! You can also raise funds when you book travel through travel sites! You can also select a donation reminder which will automatically let you know that a donation is available through a site when you browse.

If you would like any help setting this up, just pop in and see us and we can help or visit:

<https://www.easyfundraising.org.uk/causes/mayfacs>

Co-op Local Community Fund – Please select MAYFACS as your supporting charity!



MAYFACS are now one of the collecting charities for Co-op Community Local Fund for the next 12 months which means the more people we get sign up as members of the Co-op, or the more existing members who choose to support us as their local cause, the more funds we receive.

If you are already Co-op members and can go into your account and select MAYFACS as your local cause that would be amazing. If you aren't a member and would like to become one, please visit our website for more information on how to do this – or ask in store! Don't forget to sign into your account and choose MAYFACS!

The funding from Co-op Local Community Fund will support Youth activities within our community. THANK YOU.

Recycling your Ink Cartridges for MAYFACS

Don't forget that we are collecting empty ink cartridges, sending them off for recycling and turning them into funds for MAYFACS! To date we have had over £80 raised from 3 boxes sent off for recycling – not only raising funds for our charity, but also reducing landfill! Cartridges can either be dropped to MAYFACS office or to Mayfield Post Office (please note, toners are not accepted apologies!). Thank you!

Regular Activities



Do you know someone that might like to be invited to come to any of our groups? A Neighbour, A friend? Please bring them along or let us know if they would like more information. We need to grow our numbers to keep our regular groups going and the best way to do that is through our personal conversations.

Don't forget all our groups are about getting out into our community and making connections with others, whatever your age! They are open to everyone.

Festive Activities this month!

Tuesday 2nd December 2pm: Tuesday Afternoon Club – Special Christmas performance by Mayfield Primary School

Saturday 6th December 10am – 1.30pm: Shedders will be selling their shed-made products at St Dunstan's Christmas Market

Monday 8th December 2pm: Live Crib Matinee Performance for community groups (booking essential)

Wednesday 10th December 2pm: Five Ashes Tea and Chat with Christmas performance by Five Ashes Primary School

Wednesday 17th December: Little Munchkins Christmas Special! 9 – 11am Mayfield Scout Hall

NEW Bereavement Café launching in January 2026

As part of a new partnership with Rotherfield St Martin (RSM) in Rotherfield, we are launch a monthly Bereavement Café, providing a safe, welcoming, and informal space for people who have experienced loss to connect with others who understand. Cafes will run on the last Friday of each month and will alternate venues between Mayfield Cricket Club and RSM The Institute, Rotherfield. **For full details please see the poster at the end of this eNewsletter.**

Little Munchkins Baby and Toddler Group (term time only) – last session Wed 17th December, returning Wed 7th January 2026

Please do join us every Wednesday (term time) from 9am – 11am at Mayfield Scout Hall for just £3 per family! All carers, grandparents and parents are very welcome! Lots of toys and activities available for the little ones, and a cuppa and chat for the others 😊

Monthly Hearing Aid Maintenance – Next session Wednesday 10th December 10.30am – 12pm, London House.

East Sussex Hearing are hosting monthly Hearing Aid Maintenance at MAYFACS office to provide support to **Pembury, Eastbourne, Bexhill and Hastings Conquest Audiology patients** (now also extended to **Specsavers (Eastbourne, Seaford and Uckfield) and Brighton Audiology patients**), with the support of specially trained local volunteers! Please do drop by and find out what support they can offer (including battery replacements) or where you can be signposted to if they cannot support your specific need.

MAYFACS Matinee Films (No Film in December)

Thank you to the fantastic amount of people who attended our special screening of Lee in November, with Anthony Penrose delivering a brilliant Intro and Q&A session for us. Thank you so much to everyone Farleys House & Gallery for supporting this special event. Next Film in 2026: **Friday 9th January : Maria**

Transport will be available from Mayfield. £6 per person for Film admission, £3 for return transport. Collection from Memorial Hall (1.10pm) and St Thomas of Canterbury (1.20pm). No need to book just be at the bus stop to be picked up. As always, a delicious selection of cakes and refreshments will be available to purchase on the day.

Paint and Sip – SAVE THE DATE: Wednesday 11th February 7pm

Thank you to everyone who attended our Winter Mayfield Scene Paint and Sip in November!! Our next Paint and Sip event will be taking place on Wednesday 11th Feb – venue and painting to be confirmed! We are open for early bookings for anyone wishing to secure your spot now! £30 per person. Email freya@mayfacs.org.uk to confirm your place or to be on the mailing list for the next one!!

MAYFACS Community Shed holds 3 Sessions every week for anyone to come along and join in! With inside and new external workshop spaces available across all sessions every week, as well as the community garden, bee keeping and the orchard, there is plenty to get involved in whenever you are available! New Shedders always welcome!

MAYFACS Community Shed will also be selling their products at the upcoming St Dunstan's Christmas Market on Saturday 6th December, so please do come along and see us!



For more information, please visit our website

www.mayfacs.org.uk/theshed or email theshed@mayfacs.org.uk



MAYFACS COMMUNITY SHED

Merrieweathers Farm, East Street, Mayfield TN20 6RJ

The MAYFACS Shed and Community Garden is an opportunity for anyone to come along, meet some friendly people, work in the workshops or outdoor spaces on your own personal projects or community projects.

WEEKLY SESSIONS

MONDAY (Mixed Group) 9.30am - 12.30pm
WEDNESDAY (Men's Group) 9.30am - 12.30pm
THURSDAY (Mixed Group) 9.30am - 12.30pm

REPAIR CAFES

3rd Saturday of every month (no Cafe in December) at MAYFACS Shed (Refreshments available) 10am - 1pm.
Community Cafe at Five Ashes on Sat 20th April 24

Bring your repairs along, join us for tea and cake, and get to know our Repairers! You are also welcome along without repairs! Volunteer Repairers always welcome!

For more information
Email us on theshed@mayfacs.org.uk
Call MAYFACS on 01435 873888
Visit our website www.mayfacs.org.uk/theshed
or Follow us on Facebook
www.facebook.com/MayfacsShed



PLEASE NOTE – our next Repair Café will be on 17th January 2026!

Thank you so much to everyone for supporting our café in 2025! We had over 130 repairs come through our doors raising over £1000 for the Repair Café and Community Shed projects. www.facebook.com/mayfacsrepaircafe

We welcome you to find out more about our Repair Cafes, join us for some tea and cakes (you do not need to bring a repair to attend!) and find out more about our MAYFACS Shed and MAYFACS community.

www.facebook.com/mayfacsrepaircafe

MONTHLY TRIPS – 2025/26 Trips Schedule

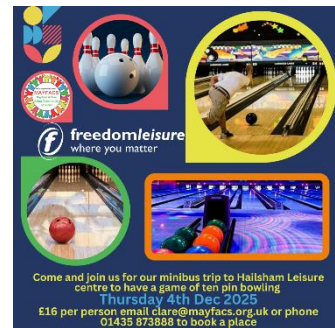
Monthly Trip places will be allocated on a first come first served basis. Please email or pop into the office to secure your place! If you would like to attend any of our trips but need some financial support, please talk to us in confidence.

Thurs 4th December: Bowling at Hailsham £16 (3 places left at the time of writing)

Thurs 8th January: Katharine Jennings Art Crafting in Rotherfield £22

Thurs 5th February: Bexhill Museum followed by fish and chip lunch £25.50

Thurs 5th March: Museum of Gardening in South Downs Nurseries £15



Men on the Move is a weekly 'walk and talk' group for men, to bring people together to explore the local area together, build connections and get some low-level exercise!

Meet every Tuesday 9.30am (please contact us to confirm meet location each week as it may vary!). **FREE TO ATTEND!** Join the group and explore the local area. Sorry no dogs.

Volunteering Opportunities – Community Car Drivers Needed! Expenses are reimbursed for your costs of travel.

Our Community Car Service runs every day of the week for those who need to access medical appointments but cannot get there any other way. In the last 4 months, requests have increased by 60% which could mean an additional 200+ drives this year! More appointments are being scheduled for Saturdays to get people the medical care they need in hospitals that are getting through waiting lists. This means we really do need more help to support this vital service for our community.

Do you work Monday to Friday, and would love to volunteer for MAYFACS, but only available on Saturday's? Do you have any spare time to undertake a drive every now and then? Do you know if your Employers offer matched volunteering time as part of their Corporate Social Responsibility programme?

Community Car Volunteers can choose what how often they are available to drive for us and the more drivers we have, the more this shares the support needed. You can also choose whether you prefer to support local drives within our Parish or travel further afield. It really can be flexible around what you can offer. **Expenses are reimbursed for your costs of travel.** The service is open to anyone who needs help getting to medical appointments, and it really does make a huge difference. For more information, please contact becky@mayfacs.org.uk.

Support Services

MAYFACS UKRAINE SUPPORT HUB

The support email address (Ukrainesupport@mayfacs.org.uk) continues to be available at all times and our phone line which is checked daily Monday to Friday (01435 873888) for any further support required, or please visit us at our office anytime to say hello. Our weekly **English Lessons** are at MAYFACS office every Tuesday 10.30 – 12.30 weekly at London House and are available for all our Ukrainian friends at various levels. Please contact the email

Support for All on our website: www.mayfacs.org.uk. Our website has specific information sections for **Youth Support** and **Dementia Support** available to everyone within our community and the surrounds. This is on top of signposting for **financial and other support**. Please do visit our website if you need any advise or help, or come into the office and chat with the team.



MAYFACS SUPPORT SERVICES

MAYFACS has many services to help you should you need any additional support at any time. All requests will be treated in the strictest of confidence, and our team will do everything we can to ensure you have access to any help that you need - be it financial, personal, social or medical.

Everyday Support Services

With our incredible team of volunteers, we can support you should you need help with emergency shopping, collecting prescriptions, getting to our activities, navigating other support services and agencies, as well as borrowing a wheelchair, DVD or Jigsaw! If you need us for anything, please just get in touch, and if we can't help, we can tell you who can! We are here for everyone within our community.

Community Car Service

Our Community Car Service ensures you can get to medical appointments when you may have no other way to get there and is open to anyone who needs to use it. Our growing team of volunteers can drive you to these appointments and get you safely home again. Whether it is a local appointment, or further afield, please contact us. This is a paid for service - literally covering the cost of providing the service and fuel for our drivers, however, if cost is a concern, please always let us know and we can look at ways we can support this for you.

Community Fridges

Community Fridges are available at Heathfield, Hailsham and Uckfield and are open to anyone, no questions asked, to collect food as and when you need it. They are there to prevent food waste and support our environment by ensuring food goes to a home. They receive donations from supermarkets, cafes, local produce suppliers, and other generous donors, as well as the general public.

Food Bank Referrals

We are able to make referrals for families and individuals to local foodbanks for anyone in need of this support, be it short term or longer. Parcels are created for you, and specific requests/dietary requirements can also be accommodated. Collections or deliveries to your house are both available. Anyone who wishes to donate food to the local foodbanks can do so at their local supermarkets and help support others in need.

MAYFACS Hardship Fund

You may be finding it difficult to make ends meet following the recent pandemic and cost of living crisis, or through a change in living or family situation. If you are finding it difficult and need some extra support, and live or work within Mayfield and Five Ashes, do contact us in confidence to discuss how we can support you through our Hardship Fund or email hardshipfund@mayfacs.org.uk

For more information about the above or any of MAYFACS activities and services, please visit us in London House, Mayfield, email us on info@mayfacs.org.uk or call us on **01435 873888**. Alternatively pick up our leaflets from various shops in Mayfield High St, Five Ashes Village Hall, Woodhill Surgery, information booths and our noticeboards! Join our eNewsletter mailing list or follow our social media or our website www.mayfacs.org.uk.



RAFFLE

MAYFACS are holding a fundraising raffle to help raise much needed funds to continue the services and support we offer to the local community.

You can buy tickets from the MAYFACS Office & Mayfield Post Office

Raffle draw to take place on Monday 8th December 12:00pm at the MAYFACS Office.

All prize winners will be notified to come and collect their prize.

ALL PRIZES HAVE BEEN KINDLY DONATED BY LOCAL BUSINESSES.

BACK MASSAGE - BLUSH BEAUTY
£45 CUT & STYLE - DIVERSE HAIR
IMAGE O2 LIFT FACIAL & LED - HALEY COOPER AESTHETICS
SOUVENIR TEA TOWEL - FOUR WINDS
HOT WATER BOTTLE - MAYFIELD OSTEOPATHS
BOTTLE OF DESSERT WINE - WINES OF MAYFIELD
BOTTLE OF WINE AND WINE TASTING TICKETS - WELLBROOK WINES
A "GET TO KNOW YOUR SEWING MACHINE" LESSON - SEW INSPIRED
AFTERNOON TEA FOR TWO WITH FIZZ - THE MIDDLE HOUSE
A BOTTLE OF DADDY RACK WHISKEY - DADDY RACK (MAYFIELD GIN)
VOUCHER - BLACK CORE STUDIO
VOUCHER - HAIR STUDIO
GIFT SETS - ST DUNSTANS CHEMIST
BOTTLE OF BUBBLES - BURNETTS
VOUCHER - WOODY'S OF MAYFIELD

PLUS SOME OTHER PRIZES DONATED FROM INDIVIDUALS WITHIN OUR COMMUNITY.





MAYFACS MONTHLY TRIPS

SCHEDULE JANUARY - JUNE 2026



Monthly Trip places will be allocated on a first come first served basis and are open to everyone. To book please pop into the office, phone and leave a message or email clare@mayfacs.org.uk



Once you've booked with the office and confirmed there is space available, please pay ASAP to secure your place via:

- a) cheque or cash to the MAYFACS office
- b) card payments in MAYFACS office
- c) BACS transfer (please include your name and the name of the trip/s as the reference)



Direct bank transfer details: Mayfield & Five Ashes Community Services (MAYFACS), Account Number 00029924, Sort Code 40 52 40

Refunds can only be given at MAYFACS discretion. If you would like to attend any of our trips but need some financial support, please talk to us in confidence.



- Thurs 8th Jan** Katharine Jennings Art in Rotherfield to do crafting £22
- Thurs 5th Feb** Bexhill Museum followed by Fish & Chip Lunch £25.50
- Thurs 5th Mar** Museum of Gardening in South Downs Nurseries £15
- Thurs 9th Apr** Hole Park to see the Bluebells £22.50
- Thurs 30th Apr** Pashley Manor Tulip Festival £26 (note replaces May trip)
- Thurs 4th June** National Cat Centre at Ashdown Forest £12.50



Most of the monthly trips leave Mayfield and Five Ashes at approx. 9-10am and are back about 4pm. The MAYFACS team will contact you a week or so before the Trip and arrange pick up times at our various stops. Because we have to pre order tickets and transport, we will not always be able to offer a refund should you cancel your place. If you are worried about accessibility for any of our activities or trips or have any questions please do let us know.

Please visit our website www.mayfacs.org.uk for updates of weekly activities or contact us at the MAYFACS Office on 01435 873888.



MAYFACS Weekly Activities

Mon

MAYFACS Shed Session: Monday 9.30am - 12.30pm Mixed Group
Merrieweathers Farm, East Street, Mayfield TN20 6RJ.

Mon

Yarners: Chat and knit, sew and crochet in Sew Inspired shop in the High Street,
£3.50 per person, 1.30-3.30pm.

Tue

Men on the Move: weekly "Walk and Talk" group for men, for any age.
Meet in Court Meadow 9.30am. *Free to attend.

Tue

Tuesday Chat: Regular meet up & chat with refreshments in Colkins Mill Church,
Station Road. 2-3pm. £2. Every Tues apart from the first Tuesday of the month.

Tue

Tuesday Afternoon Club: First Tuesday of the month in Colkins Mill Church, Station
Road, Mayfield 2-4pm £3 including a Speaker, raffle and a light afternoon tea. Please
bring a small prize to share for the raffle.

Wed

Little Munchkins Baby & Toddler Group: For all carers, parents & grandparents and
under fives. Every Wednesday, term time only in the Scout Hall 9-11 am. £3 per family.

Wed

MAYFACS Shed Session: Wednesday 9.30am - 12.30pm Men's Shed Group
Merrieweathers Farm, East Street, Mayfield TN20 6RJ.

Wed

Writing for fun: A monthly group on 3rd Wednesday of the month at
10am – 12pm in London House. £3 including refreshments.

Wed

Wednesday Chat: Every 2nd & 4th Wednesday, 2-3pm in Five Ashes Village Hall.
£2. Transport available. (Speaker on 4th Wednesday).

Thur

MAYFACS Shed Session: Thursday 9.30am - 12.30pm Mixed Group
Merrieweathers Farm, East Street, Mayfield TN20 6RJ.

Thur

Poetry: 1st Thursday 11-12.30 Coach House Cottage, Royal Oak Mews, Mayfield £2.

Thur

Middle House Lunch: 2nd Thursday of the month on a rota basis.
12.30pm £12.50 for senior citizens living alone.

Thur

Community Café Crowborough : A dementia friendly group for people to come
together to enjoy an activity and refreshments. Last Thursday of the month.
2-4pm. Chaperoned transport available from Mayfield.

Fri

MAYFACS Film Club (SEPT-MAR): Five Ashes Village Hall. Please see our
programme of films. 1.45-4pm £6. Transport from Mayfield £3.

Fri

Art at the Shed (APR-SEPT not in AUG) : 4th Friday of the month 10 -12 pm £3-5
MAYFACS Shed. Materials and refreshments provided. Booking essential.

Fri

Games/Scrabble/Cribbage: 3rd Friday of the month 2-4pm £3 at London House,
bring a game or join in with some friendly games.

Sat

Create @ the Shed: 1st Saturday of the month 10am - 12.30pm refreshments
provided. Donations to cover materials. School age Years 7 - 11. Booking essential.

Sat

MAYFACS Shed Monthly Repair Cafe 3rd Saturday of every month (except Dec)
open 10am - 1pm refreshments available. At MAYFACS Shed.



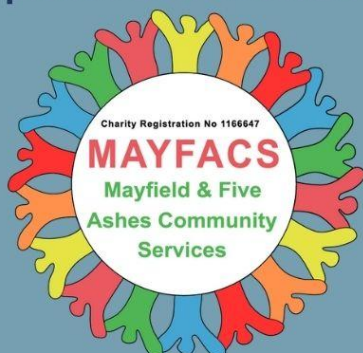
No need to pre book, unless stated. * Free to attend as Grant funded
Please visit www.mayfacs.org.uk or contact us on 01435 873888

Bereavement Café

The Bereavement Café is a welcoming, informal space where people who have experienced loss can come together to talk, listen, and share their experiences of grief.

It's not a counselling session, but rather a monthly supportive community gathering that helps reduce isolation and encourages open conversation about loss and healing.

For more details or directions please don't hesitate to contact us.



01435 873888 01892 853021



**WE MEET ON THE
LAST FRIDAY OF THE MONTH
10AM - 12PM
ALTERNATELY AT
MAYFIELD CRICKET CLUB
TN20 6EA AND
THE INSTITUTE,
ROTHERFIELD TN6 3LX**

**FREE TO ATTEND
DONATIONS WELCOME
LIMITED SPACES
AVAILABLE**

30th Jan 2026 - Mayfield
27th Feb 2026 - Rotherfield
27th March 2026 - Mayfield
24th April 2026 - Rotherfield
29th May 2026 - Mayfield
26th June 2026 - Rotherfield

31st July 2026 - Mayfield
28th Aug 2026 - Rotherfield
25th Sept 2026 - Mayfield
30th Oct 2026 - Rotherfield
27th Nov 2026 - Mayfield

SOCIAL MEDIA : MAYFACS is on social media! Please follow us to keep up to date with our activities and to learn more about what we do! MAYFACS OFFICE info@mayfacs.org.uk



@MAYFACS
@MAYFACSSHED
@MAYFACSREPAIRCAFE



@MAYFACS2016

BANK DETAILS: (for donations, payments of trips and activities)

Mayfield & Five Ashes Community Services (MAYFACS)

Account No 00029924 Sort Code 40-52-40

Contact Details – Lucy Jervis, Freya Huxtable, Clare Vosloo, Becky Smith, Gill Lawday

Telephone: 01435 873888 in the first instance and leave a message. We will phone you back.

www.mayfacs.org.uk

Emails: manager@mayfacs.org.uk, freya@mayfacs.org.uk, clare@mayfacs.org.uk, becky@mayfacs.org.uk,
finance@mayfacs.org.uk; theshed@mayfacs.org.uk, ukrainesupport@mayfacs.org.uk, info@mayfacs.org.uk;
create@mayfacs.org.uk.

Please visit our website www.mayfacs.org.uk for updates of weekly activities or contact us at the MAYFACS Office on 01435 873888.

